

KCKPD & Fairfax District

Uniting business &
technology to create a
safer community.

Captain Fithian & Detective Morgan
07/19/2023



Overview

1

RTICC?

Explanation of what the Real-Time Intelligence Crime Center is and how it is transforming crime prevention in KCK.

2

Optional Technology

A few of the technological options that can assist KCKPD in making your community safer and how we are currently utilizing those tools.



1

What is KCKPD's RTICC

Utilizing technology to
unleash the power of real-
time intelligence.



RTICC

A centralized location with advanced technology and dedicated personnel who actively gather, analyze, and disseminate up-to-the-minute information and intelligence to field officers.

- License Plate Readers
- Traffic Cameras
- Open Source Intelligence

Example RTICC Workflow



Crime Occurs
(Dispatched)

RTICC
(Monitoring)

Officers
(Responding)

Resources

Review
available
cameras &
LPR's

Broadcast
Suspect Info

ex. red sedan

Observes Suspect
Descriptors

Makes arrest or
follow up

Optional Technology

Equipment that can assist with KCKPD's endeavors to help reduce & prevent crime in the Fairfax district.

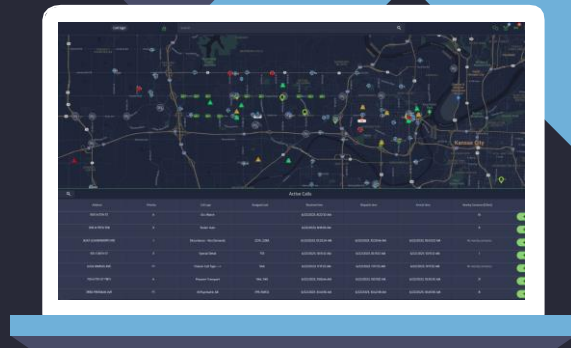
*For information purposes only. KCKPD does not solely endorse any company or equipment.



2

FUSUS

Unifies all available live video feeds including public and private (allowable with subscription) systems along with LPRs, CAD, AVL.



Three Options for Implementation



PD Provided

PD provides the box and has access to the streams. Partner has no money out of pocket but no additional capabilities. MOU needed.



Box Purchased

Partner purchases the box for monitoring but not the service. PD can see streams only.



Box & Service

Partner purchases the box and service. Partner and PD has remote access to streams.



Core Elite

\$5,000

*Box Only

1

Built-in AI

Automate detection data such as identifier alerts

2

Large Systems

Up to 50 cameras with 36TB of internal storage

3

Real-time feed into KCKPD

Viewable by field officers and RTICC

4

Subscription Fee

Annual subscription fee of \$2300



Core Pro

\$600

*Box Only

1 No AI

Does not automate alerts

3 Real-time feed into KCKPD

Viewable by field officers and RTICC

1

2

3

4

2 Mid-size Syst.

Up to 25 cameras with 4TB of internal storage

4 Subscription Fee

Annual subscription fee of \$900



Core Lite

\$200

*Box Only

1

2

No AI

Does not automate alerts

Small Systems

Up to 4 cameras with 512GB of internal storage

Real-time feed into KCKPD

Viewable by field officers and RTICC

3

4

Subscription Fee

Annual subscription fee of \$150



fūsus

Thank You!

Do you have any
questions?

Captain Kevin Fithian
kfithian@kckpd.org
913.573.6290

Detective Cameron Morgan
cmorgan@kckpd.org
913.573.6032

